



Guide to Access the NISER Campus LAN at Jatni

through **VPN**



1. Please open any browser and go to: <https://210.212.23.98:10443>

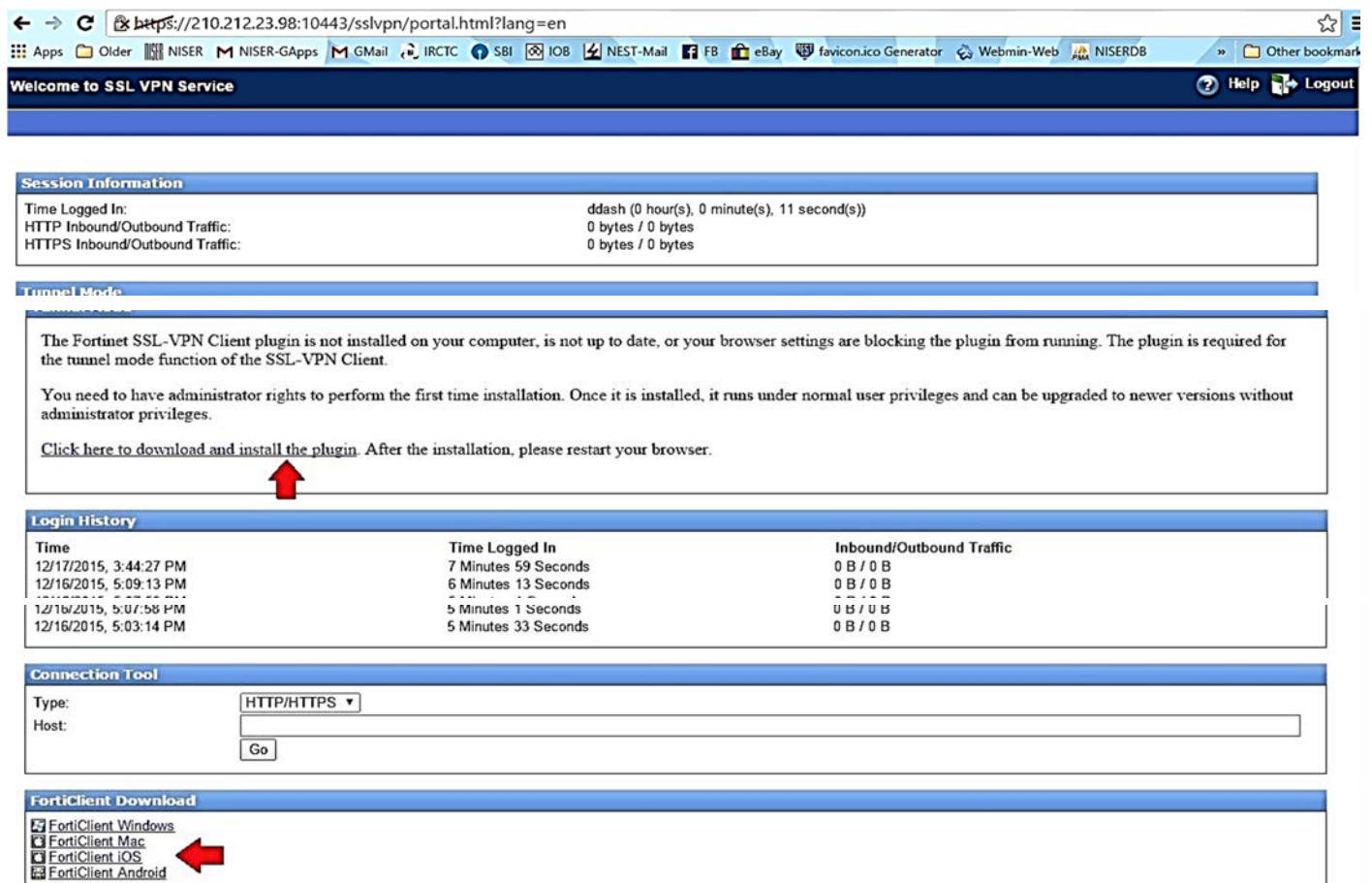
OR

2. <https://14.139.217.114:10443>

Put the username and password (not the mail password) and click on login button.

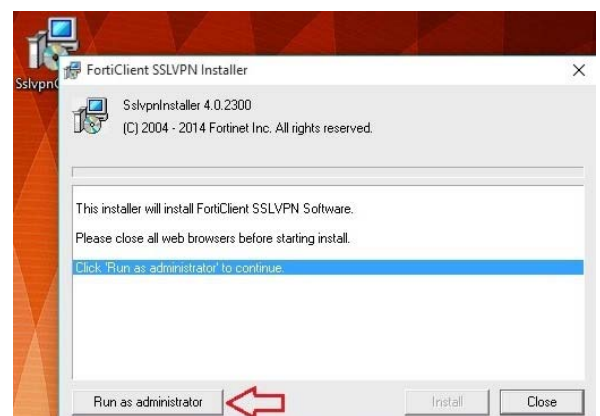
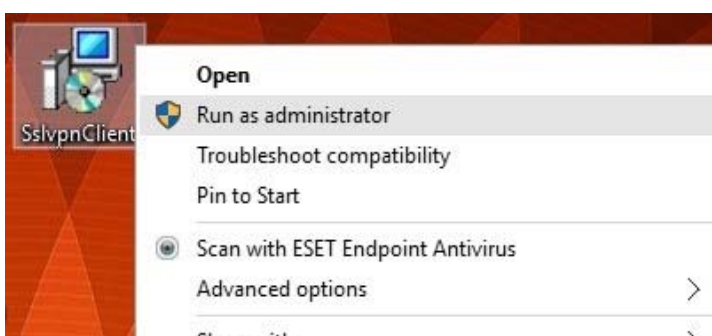


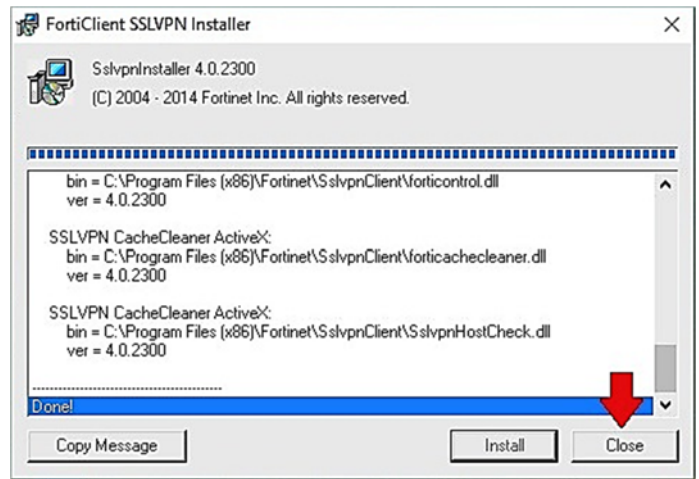
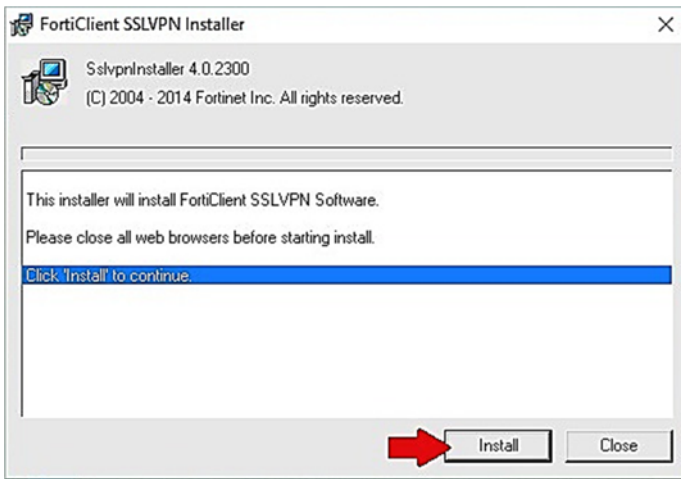
2. Click on **Click here to download and install the plugin**, if you are using Windows OS, and SAVE the '.exe' file. You can also choose the application for Mac/ iOS/ Android at the bottom. Linux will be added later.



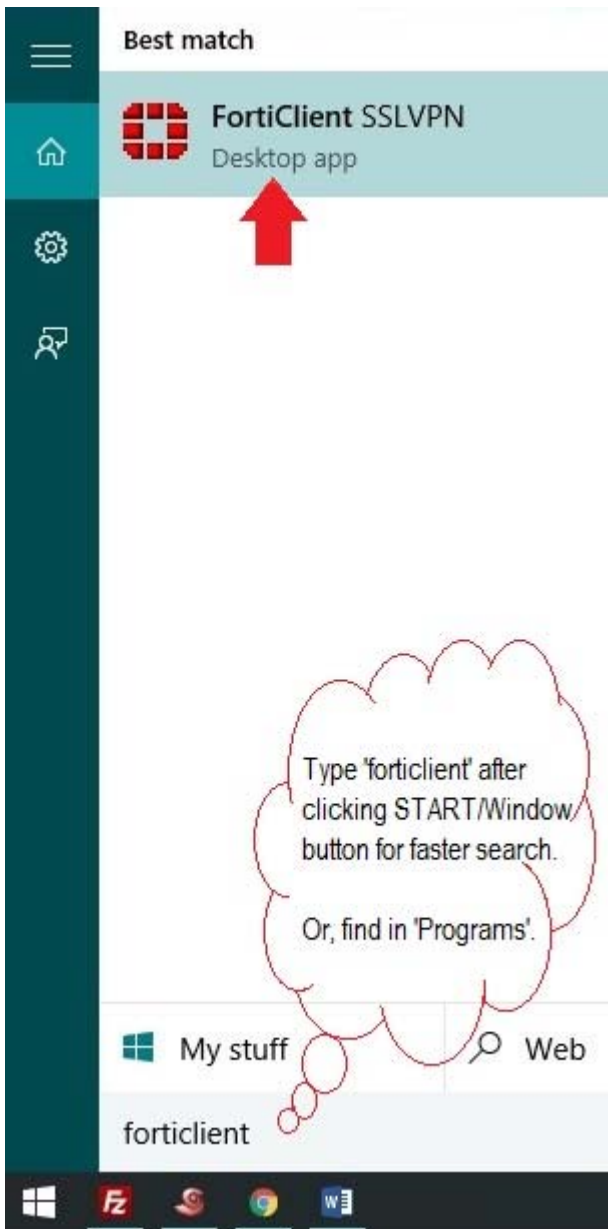
3. Then install the plugin (*Run as Administrator*). When done close the window from **Close** button.

Right click >> Run as administrator **OR** Double click >> Run as administrator

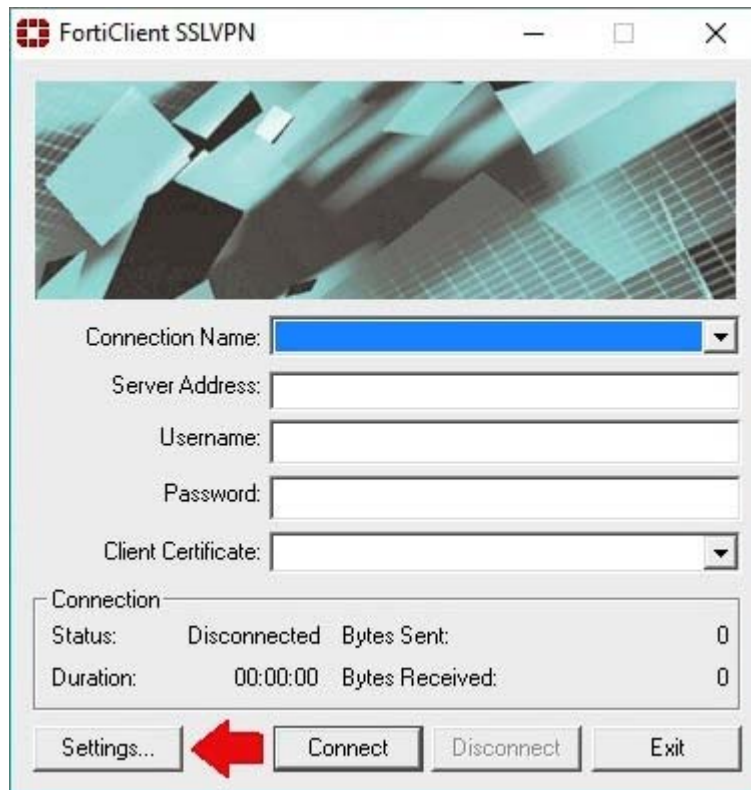




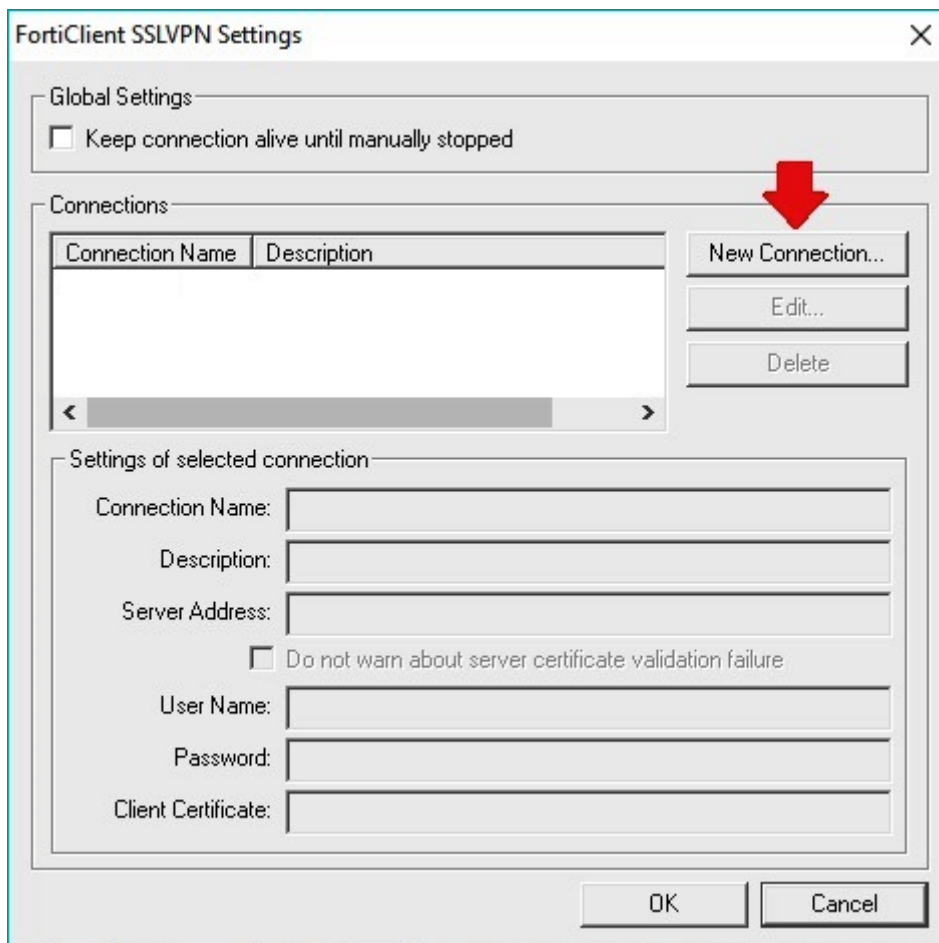
4. Logout from FortiClient via web (click logout in top right corner of browser).
5. Run the application [Start >> Programmes >> **FortiClient SSL VPN**]



6. Then Click on **Settings...**



7. Then click on **New Connection...** and fill as shown below.



New Connection Settings

Connection Settings

Connection Name: Any_Name

Description:

Server Address: 210.212.23.98

Do not warn about server certificate validation failure

User Name: user

Password: xxxxxxxx

Client Certificate:

OK Cancel

Server IP: 210.212.23.98

FortiClient SSLVPN Settings

Global Settings

Keep connection alive until manually stopped

Connections

Connection Name	Description
NISERVPN	

New Connection...
Edit...
Delete

Settings of selected connection

Connection Name:

Description:

Server Address: 210.212.23.98

Do not warn about server certificate validation failure

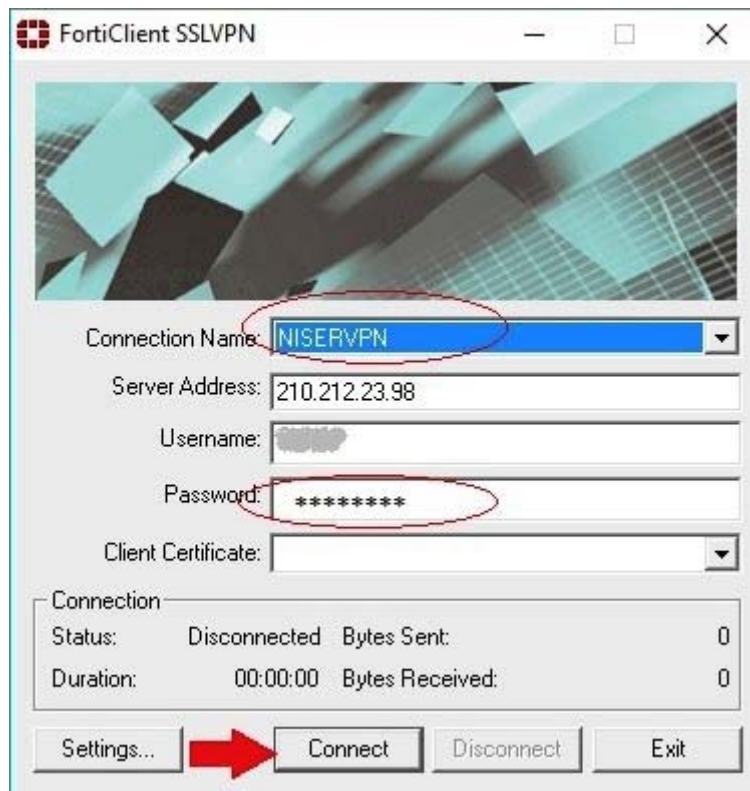
User Name:

Password:

Client Certificate:

OK Cancel

8. Then click on choose a 'connection', provide password and click **Connect**.



9. Click on **Yes** in Security Alert box.



10. Now you are connected.